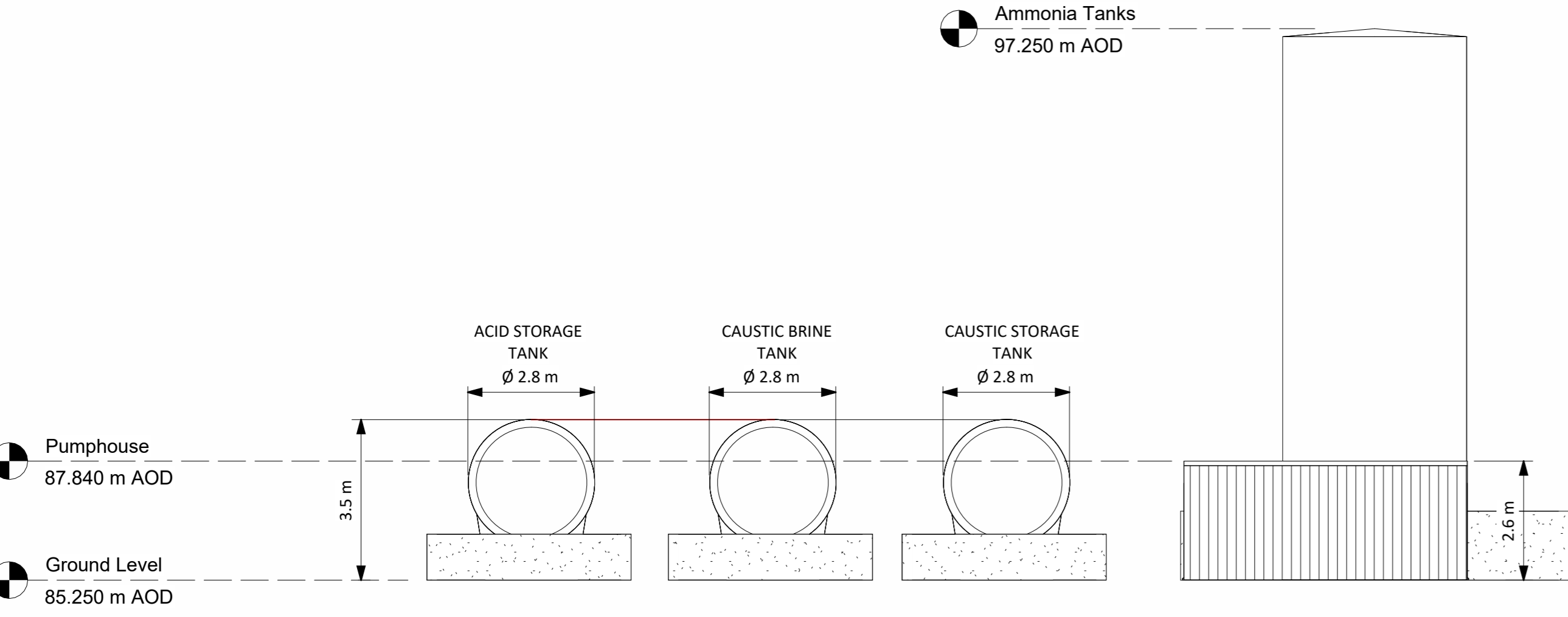
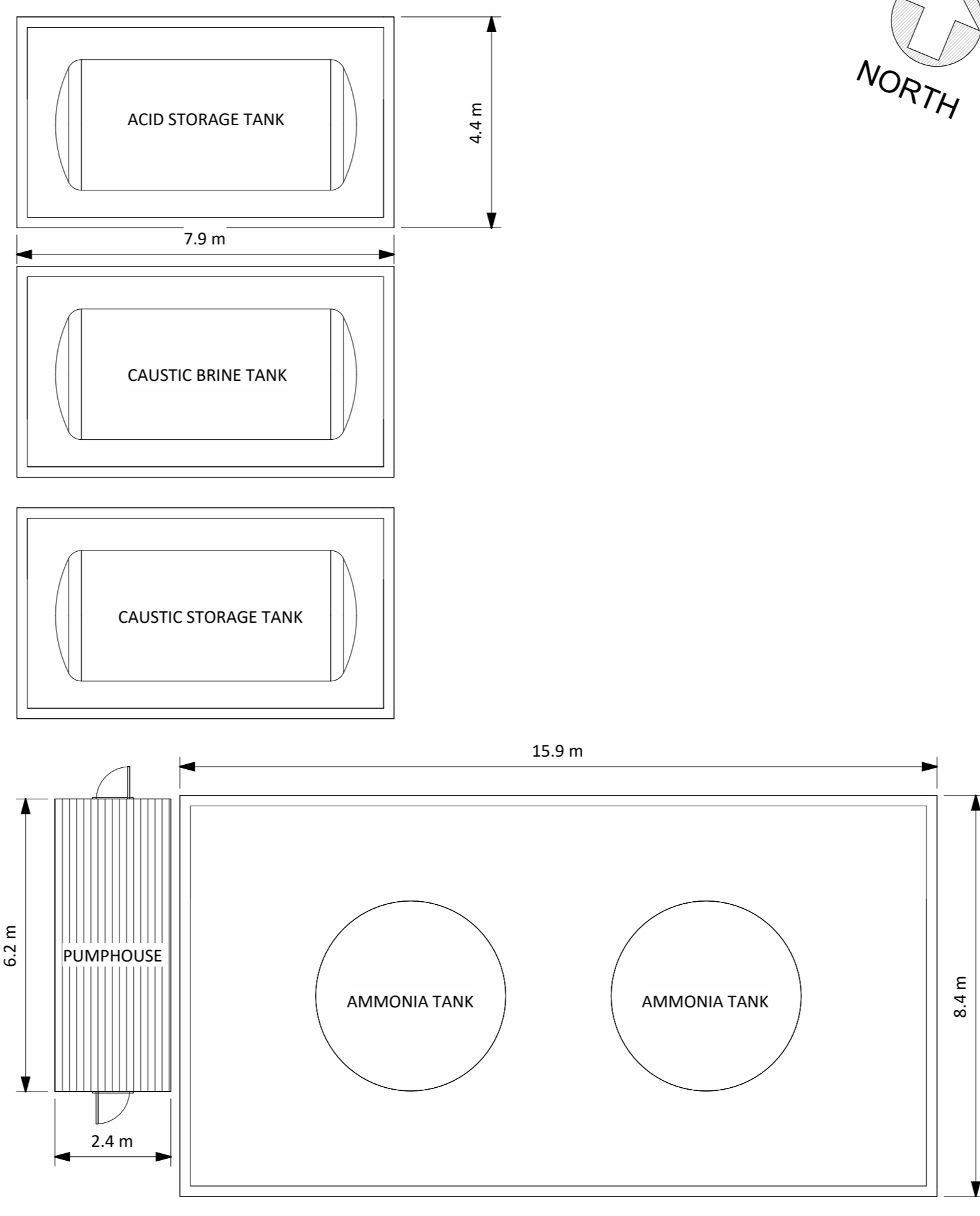


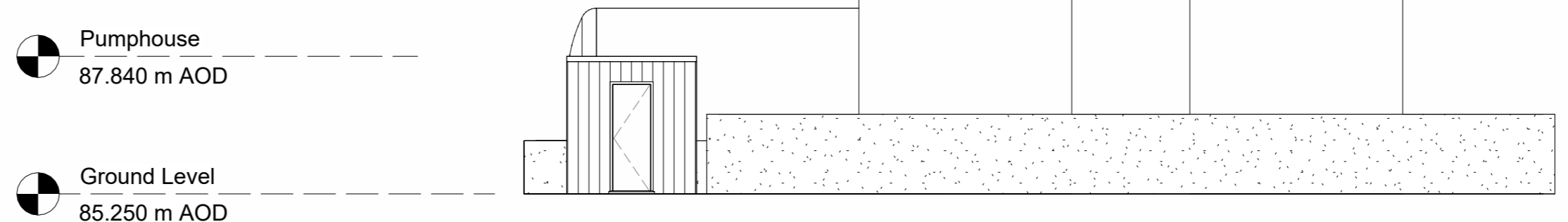
2 Storage Area North Elevation
1 : 100



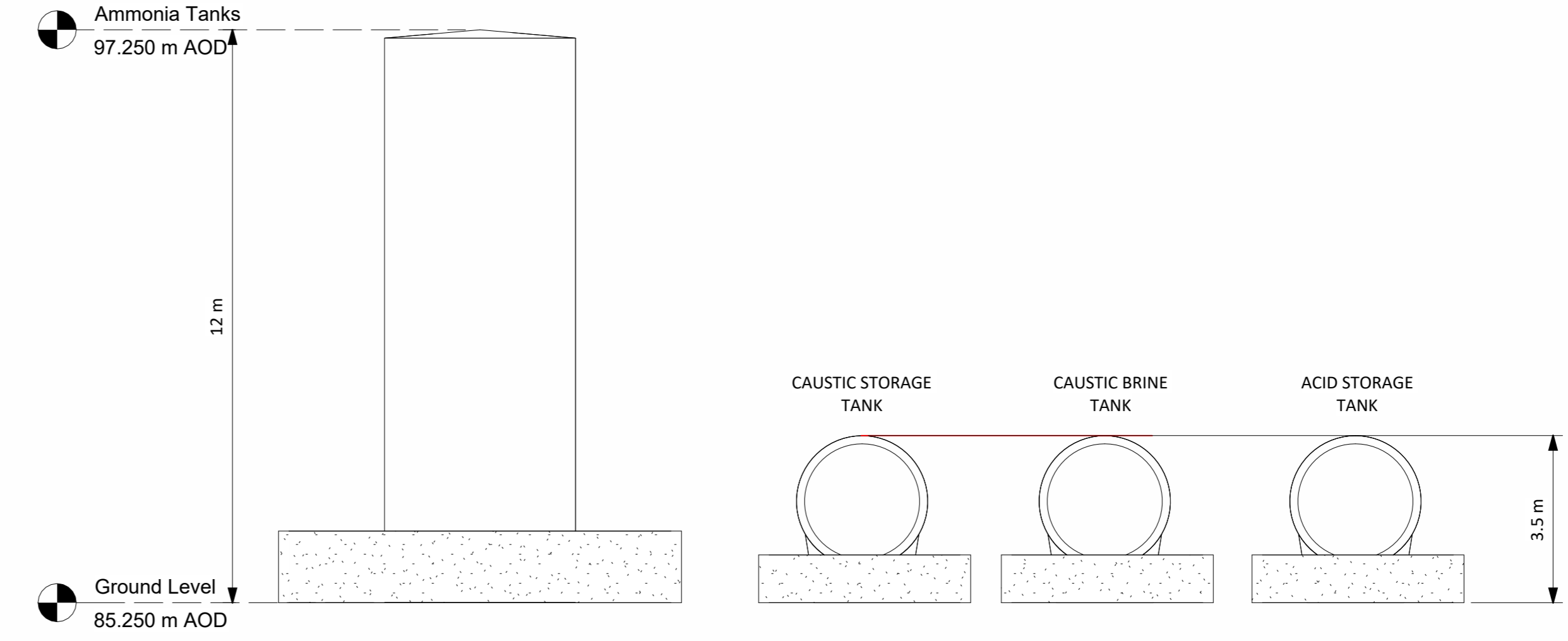
4 Storage Area West Elevation
1 : 100



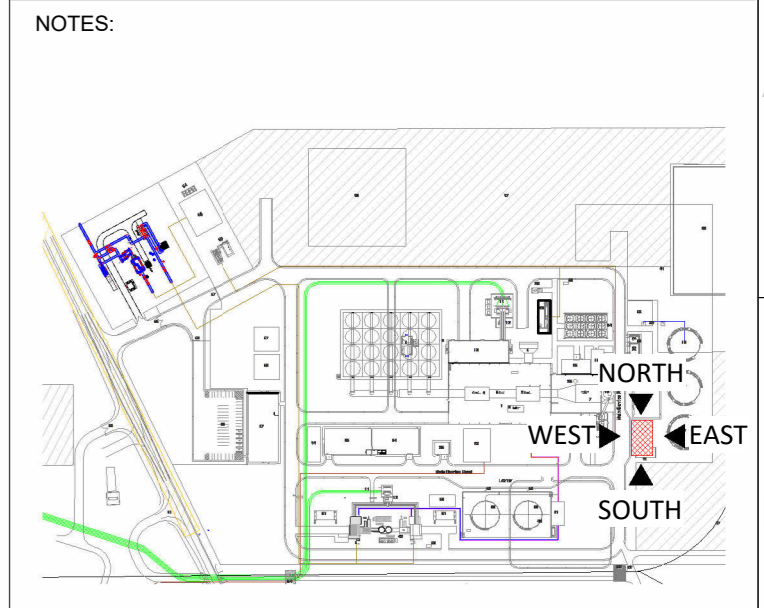
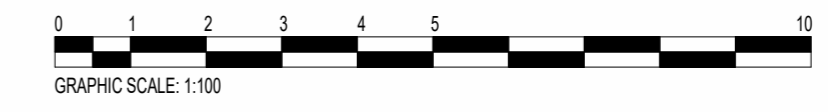
1 Storage Area Plan 85.250m AOD
1 : 100



3 Storage Area South Elevation
1 : 100



5 Storage Area East Elevation
1 : 100



Key Plan
1 : 6000

- NOTES:
- Building colours will range within a muted mid-dark grey and green spectrum. Refer to EIA Vol. II, Appendix 10A for detail
 - Final detail of building finishes to be agreed with planning authority in advance of development commencing

| REV. | DETAILS OF REVISION | DRAWN | CHKD | APR | DATE |
|------|---------------------|-------|------|-----|----------|
| R1.0 | FOR PLANNING | DTW | AO1 | BAB | 26.01.24 |

FICHTNER
CONSULTING ENGINEERS LIMITED
7 Sir John Rogerson's Quay, Block C,
Grand Canal Docklands,
Dublin 2, D02 VK60
Tel: +353 (1) 506 0632
Website: www.fichtner.ie

CLIENT: **Bord na Móna Powergen Limited**
SITE:
PROJECT: **Derrygreenagh Power**
TITLE: **CAUSTIC, ACID & AMMONIA STORAGE AREA**

| | | | |
|--------------|-----|-------|----------|
| DRAWN BY: | DTW | DATE: | 26.01.24 |
| CHECKED BY: | AO1 | DATE: | 26.01.24 |
| APPROVED BY: | BAB | DATE: | 26.01.24 |

FILENAME:
OFFICE OF ISSUE: **DUBLIN**
SHEET SIZE: **A1** SCALE: 1:100
DRAWING No.: **S7060-8050-0036** Sheet 1 of 1 REVISION: **R1.0**