

Appendix 11B

Site, Receptor and Monitoring Locations

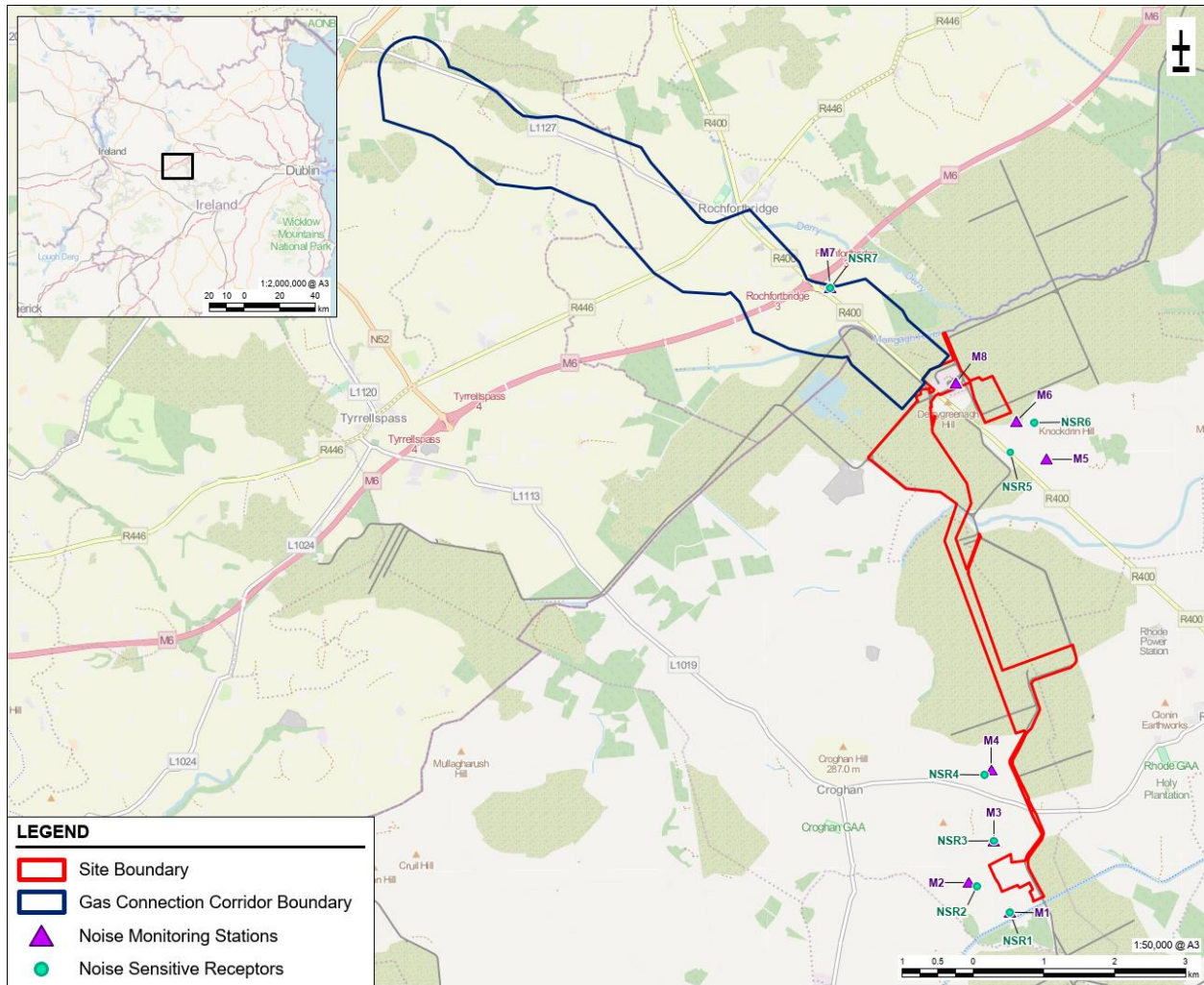
[THIS PAGE INTENTIONALLY LEFT BLANK]

APPENDIX 11B: SITE, RECEPTOR AND MONITORING LOCATIONS

Description of Monitoring Locations During On-Site Observations

The following Figure 1.1 illustrates where the monitoring locations are within the surrounding environs of the Proposed Development. A description of these locations and their coordinates is also presented below.

Figure 1: Map of Monitoring Locations.



Location M1 (Coordinates: 53.3249483; -7.2433253) is a derelict farmhouse located approximately 100m north of the Grand Canal at Coole, Co. Offaly. The site is surrounded by farmland, with open bog 500m to the east.

Plate 1: View of Location M1.



Location M2 (Coordinates: 53.3287816; -7.2520075) is a working dog kennel located to the west of Location M1 at the end of a long cul-de-sac, also in Coole. It is surrounded by open farmland. The nearest open bog is approximately 800m to the east.

Plate 2: View of Location M2.



Location M3 (Coordinates: 53.3340252; -7.2466146) is a working farm with a residential property attached, located in Togher, Co. Offaly. It is surrounded by open farmland. The nearest open bog is approximately 500m to the southeast.

Plate 3: View of Location M3.



Location M4 (Coordinates: 53.3429941; -7.2469539) is an isolated farmhouse in Togher. It is surrounded by open bogland on its northern and western sides, and open farmland to the south and west.

Plate 4: View of Location M4.



Location M5 (Coordinates: 53.3824483; -7.2345442) is a residential property in Knockdrin, Co. Offaly, with farm buildings attached. Its immediate surroundings are open farmland, with the Derrygreenagh bogs to the north.

Plate 5: View of Location M5.



Location M6 (Coordinates: 53.3872659; -7.2408631) is on the edge of the bog area to the east of the Derrygreenagh facility. There are residential properties further up the road.

Plate 6: View of Location M6.



Location M7 (Coordinates: 53.4044058; -7.2801307) is a residential property in Rahanine, Co. Westmeath. It is within 160m of the off-ramp from the M6 motorway at the Rochfortbridge exit, junction 3. It is also 2km northwest of the Derrygreenagh facility. Its immediate surroundings are open farmland, with the Derrygreenagh bog to the southeast.

Plate 7: View of Location M7.



Location M8 (Coordinates: 53.3922107, -7.2536459) is within the Derrygreenagh facility on the western edge of the compound. It is surrounded on all sides by open bogland. The noise levels here would also be affected by the operation of the facility, with slow moving vehicles.

Plate 8: View of Location M8.

